

## **BOARD OF EDUCATION**

Ellen Solek, Ed.D.  
Superintendent of Schools  
129 Church Street  
860-584-7000

### **District Mission Statement**

*To maintain a safe and secure learning environment that provides all students with the necessary knowledge and skills to successfully complete college or other post high school education or training.*

### **Service Narrative**

The Bristol Public School system provides educational services ranging from pre-school through adult education programs. Bristol is known as one of the most effective urban districts in the State of Connecticut. Bristol provides an excellent education within a diverse environment thereby preparing students for success in a challenging world. Bristol's reform and improvement model has been adopted by the Connecticut Department of Education for use in all urban districts in the State and many suburban and rural districts as well.

Within the school system, there are six elementary schools, which accommodate learners in pre-kindergarten through grade five; two 21<sup>st</sup> century K-8 schools were opened for the 2012-2013 school year. The West Bristol and Greene Hills K-8 schools are state of the art facilities incorporating the latest technologies. Two middle schools, Chippens Hill and Northeast, provide high quality, rigorous programs for grades six, seven and eight; and two comprehensive high schools, educating students in grades nine through twelve. Bristol Central and Bristol Eastern High Schools have been nationally recognized by U.S. News as performing in the top 5% of public high schools across the country. Many of our graduates are accepted at top-performing colleges and universities nationwide.

In addition to its regular public school programs, Bristol Preparatory Academy provides an alternative high school education program. Bristol maintains an extensive special education program with a variety of services provided to students from pre-school to age twenty-one. Bristol's program for gifted learners includes programs and teacher resource services for students identified as intellectually gifted in grades three through twelve. Academically gifted students may choose from numerous Advanced Placement courses that may provide them with college credit prior to high school graduation. A variety of College Pathways have been articulated with Tunxis Community College, affording students opportunities to earn college credits while still in high school.

The academic program is complemented by a wide variety of extracurricular activities, including intramural and interscholastic sports, instrumental and vocal music programs, and many student organizations, which are available to all students.

The Bristol community is further served by a parochial school system of four elementary (K-8) schools and one high school. The Bristol Technical Educational Center is open to adults and high school students in grades 11 and 12, and is approved for veterans. Opportunities for post-secondary education in technical, professional and the liberal arts fields abound in the area through both public and private schools. Tunxis Community College is one mile over the Bristol border in the town of Farmington and Central Connecticut State University is in nearby New Britain. Branches of the University of Connecticut and State technical colleges are located in both Waterbury and West Hartford, twenty minutes away.

Also available in the area are early childhood schools and day care facilities, as well as before and after care programs in all of the K-5 and K-8 schools.

**Board of Education Summary - (continued)**

**Long Term Goals**

The Bristol Board of Education produces an annual Accountability Plan containing goals related to academic performance in mathematics, reading, writing and science, physical fitness, earning college credit prior to graduation and attendance. Each school created a School Student Success Plan, their school-based accountability plan - based upon the data related to their students. All of the school accountability plans are available on the district's website at [www.bristol.k12.ct.us](http://www.bristol.k12.ct.us) with direct links to each school's homepage.

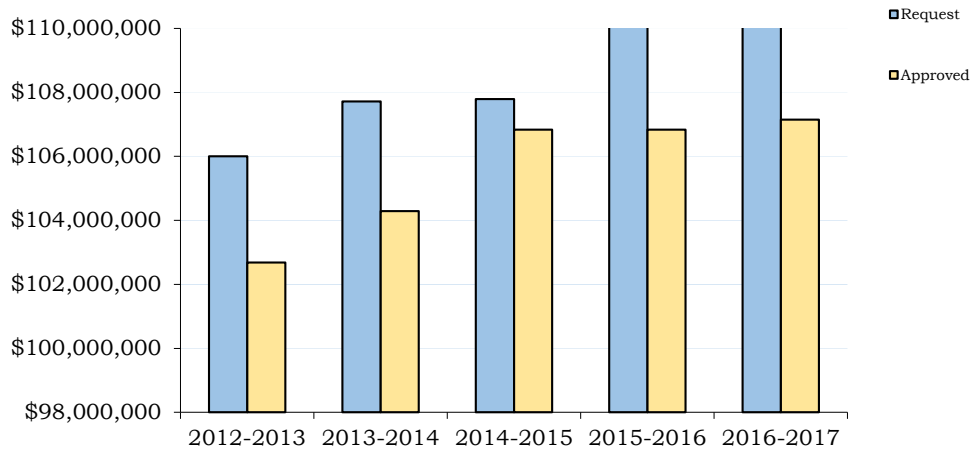
The overarching goal of the Bristol School District calls for all students to be prepared for college or post secondary education. To do this, we must focus on helping all students to achieve at high levels in rigorous coursework. We continue to focus on purposeful 21<sup>st</sup> century course re-design and alignment with the State's core curricula and on the 'instructional core' – what teachers do in the classroom with students around challenging content.

**Budget Highlights**

**Alliance Grant:** The Bristol Public Schools qualified as one of the Commissioner of Education's Alliance Districts in June of 2012. Appropriations will be provided to the district over a five year period, beginning in the 2012-13 school year. Bristol's Alliance grant funding will be allocated toward improving upon early literacy acquisition, SRBI, a tiered system of interventions for students and schools in the district, professional development on the new teacher and administrator evaluation systems, Common Core State Standards implementation, SBAC, and additional learning time and early childhood programs.

**Budget Summary**

Board of Education- Request vs. Approved

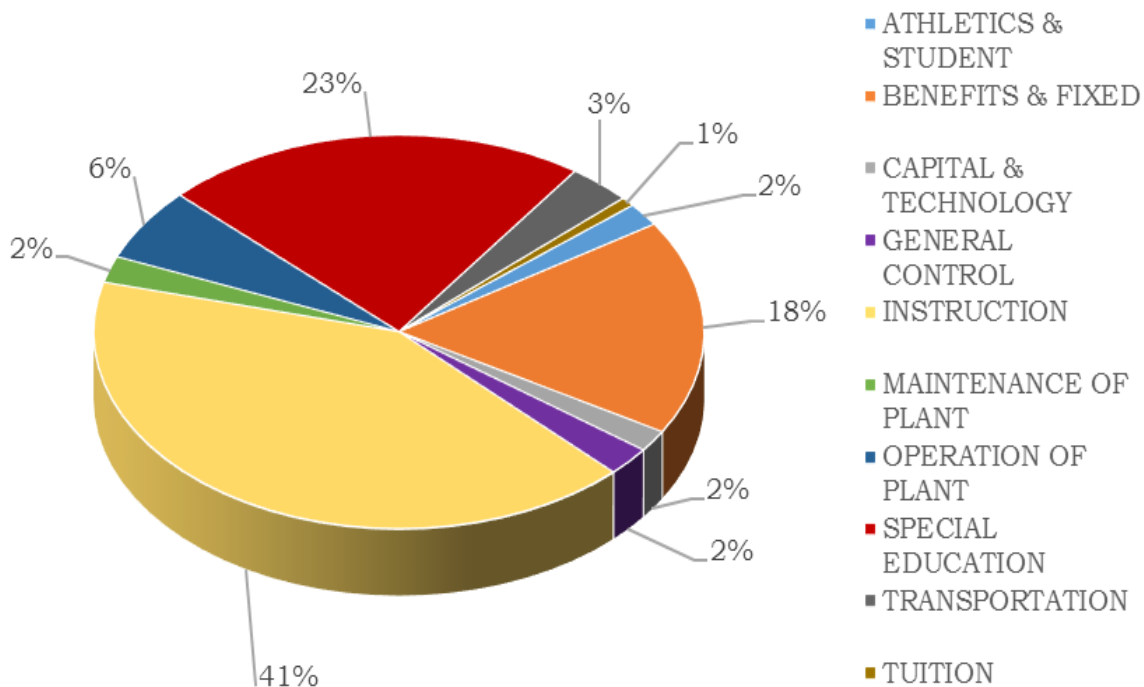


**Program Summaries-  
Board of Education**

**Board of Education Summary - (continued)**

EDUCATION EXPENDITURE OBJECTS	PRIOR YEAR ACTUAL 2014-2015	ORIGINAL BUDGET 2015-2016	REVISED BUDGET 2015-2016	BUDGET REQUEST 2016-2017	JOINT BOARD APPROVED 2016-2017
ATHLETICS & STUDENT	1,748,549	2,025,012	2,009,795	2,061,098	2,032,930
BENEFITS & FIXED	2,259,681	17,085,798	2,487,523	18,955,404	18,955,404
CAPITAL & TECHNOLOGY	1,858,517	1,938,217	1,941,732	1,993,739	1,895,596
GENERAL CONTROL	2,678,044	2,572,887	2,571,487	2,552,379	2,543,051
INSTRUCTION	45,587,286	47,141,180	47,137,007	48,036,221	44,389,513
MAINTENANCE OF PLANT	2,088,046	2,262,612	2,262,912	2,570,672	2,335,992
OPERATION OF PLANT	6,409,948	6,353,130	6,353,130	6,425,168	6,423,980
SPECIAL EDUCATION	23,168,927	23,063,608	23,063,608	23,866,277	24,176,868
TRANSPORTATION	4,092,607	3,578,906	3,596,181	3,796,282	3,578,906
TUITION	893,847	815,000	815,000	775,000	815,000
MISCELLANEOUS	63,251	0	0	0	0
<b>TOTALS</b>	<b>\$90,848,703</b>	<b>\$106,836,350</b>	<b>\$92,238,375</b>	<b>\$111,032,240</b>	<b>\$107,147,240</b>

Board of Education Expenditure Objects 2016-2017



**Program Summaries-  
Board of Education**

**Board of Education Summary - (continued)**

**Expenditure and Position Summary**

	2014-2015	2015-2016	2016-2017
Salary Expenditures*	\$64,391,757	\$64,675,353	\$66,435,576
Full time Positions	957	968	988

\*The salary expenditures represent funding from the General Fund only, excluding grant salary expenditures.

<b>Personnel – General Fund</b>	<b>Fiscal Year 2015</b>	<b>Fiscal Year 2016</b>	<b>Fiscal Year 2017</b>
Teachers	586	586	589
Administrative & non-teaching	371	382	399
<b>Total</b>	<b>957</b>	<b>968</b>	<b>988</b>
Bristol Federation of Teachers - Local 1464	586	586	589
Bristol Association of Principals & Supervisors	31	30	30
Bristol Municipal Employees Local 2267 <i>Custodial, Maintenance, Paraprofessionals, Building Aides &amp; Cafeteria Workers</i>	246	257	275
Council 4 AFSCME 818 Supervisors	6	6	6
Non-Bargaining Employees	14	15	15
Secretaries & library clerks – Local 3551	74	74	73
<b>Total</b>	<b>957</b>	<b>968</b>	<b>988</b>

**Historic Elementary, Middle and High School Enrollments (K-12)<sup>1</sup>**

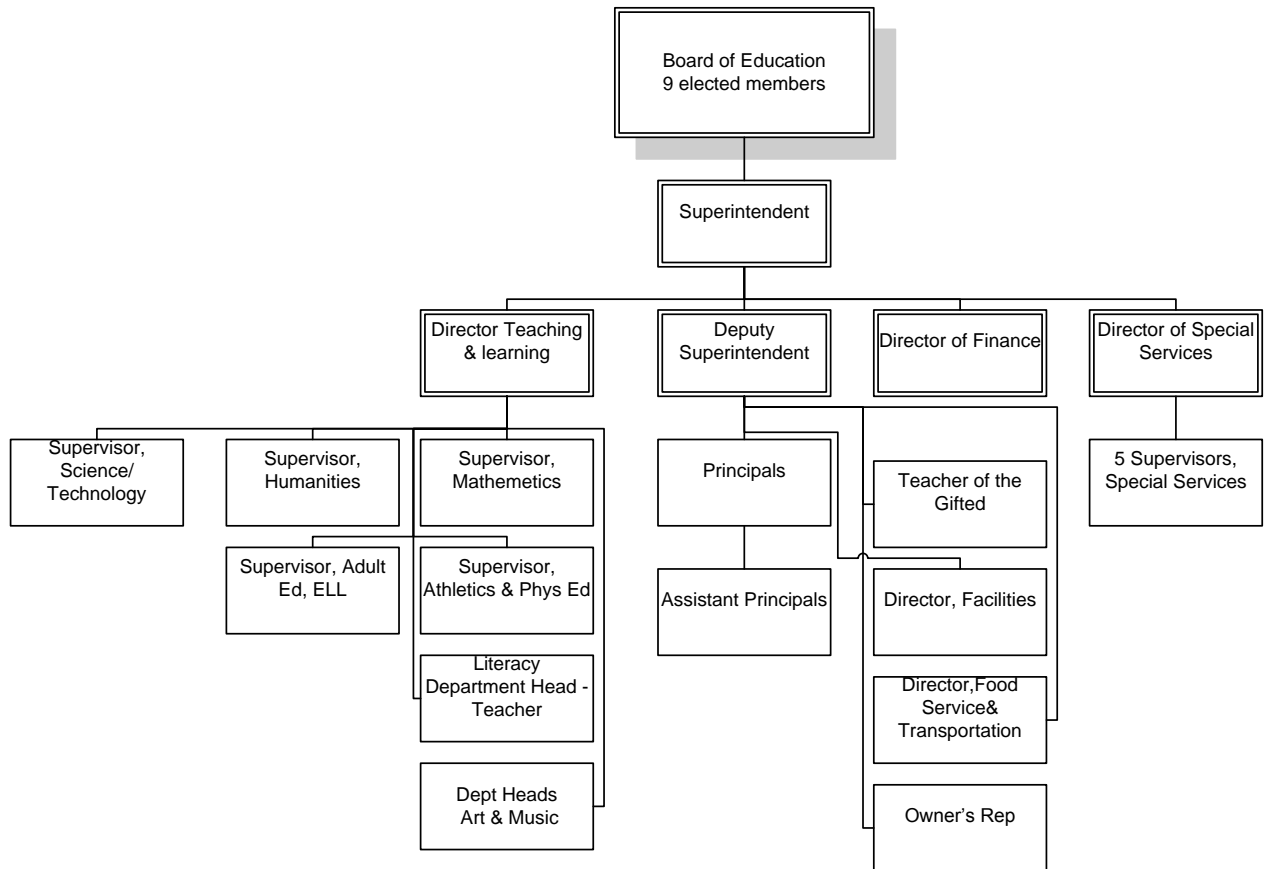
<b>School</b>	<b>10-1-10</b>	<b>10-1-11</b>	<b>10-1-12</b>	<b>10-1-13</b>	<b>10-1-14</b>	<b>10-1-15</b>
Edgewood	396	393	366	354	339	342
Hubbell	466	503	440	424	427	457
Ivy Drive	400	398	426	398	408	405
Jennings	366	387	Closed	Closed	Closed	Closed
Mt. View	320	310	427	437	385	379
O'Connell	320	327	Closed	Closed	Closed	Closed
South Side	580	564	492	503	538	500
Stafford	451	439	519	504	459	461
<b>Elementary Total:</b>	<b>3,624</b>	<b>3,628</b>	<b>2,670</b>	<b>2,620</b>	<b>2,556</b>	<b>2,544</b>
Chippens Hill	882	816	754	718	775	713
Memorial Boulevard	515	512	Closed	Closed	Closed	Closed
Northeast	563	560	512	453	436	444
<b>Middle School Total:</b>	<b>1,960</b>	<b>1,888</b>	<b>1,266</b>	<b>1,171</b>	<b>1,211</b>	<b>1,157</b>
Greene-Hills	325	307	899	890	895	930
			899	944	919	919
<b>K-8 Total:</b>			<b>1,798</b>	<b>1,834</b>	<b>1,814</b>	<b>1,849</b>
Bristol Central	1,311	1,303	1,339	1,220	1,182	1,150
Bristol Eastern	1,352	1,292	1,271	1,277	1,255	1,199
Bristol Prep Academy						48
<b>High School Total:</b>	<b>2,663</b>	<b>2,595</b>	<b>2,610</b>	<b>2,497</b>	<b>2,437</b>	<b>2,397</b>
<b>Total Enrollment</b>	<b>8,247</b>	<b>8,111</b>	<b>8,344</b>	<b>8,122</b>	<b>8,018</b>	<b>7,947</b>
<b>Out-placed Spec. Ed.</b>	<b>61</b>	<b>74</b>	<b>69</b>	<b>73</b>	<b>79</b>	<b>79</b>

<sup>1</sup>Note: Excludes ASEP

**Program Summaries-  
Board of Education**

**Board of Education Summary - (continued)**

**Organizational Chart**



**BOARD OF EDUCATION MEMBERS**

Christopher Wilson, Chairman  
 Karen Hintz, Secretary  
 Jennifer Dube  
 Thomas P. O'Brien  
 Tina Taylor

Karen Vibert, Vice-Chairman  
 Jeff Caggiano  
 Joseph Grabowski  
 David Scott

**CENTRAL OFFICE ADMINISTRATION**

Ellen Solek, Ed.D., Superintendent  
 Susan Kalt Moreau, Ph.D., Deputy Superintendent  
 Gary Franzi, Director of Finance  
 Samuel Galloway, Director of Human Resources  
 Dr. Kim Hapken, Ed.D., Director of Special Services  
 Dr. Pam Brisson, Director of Teaching & Learning

**Program Summaries-  
Board of Education**

**Board of Education Summary - (continued)**

**Performance Measures**

In 2014-15 and 2015-16, CAPT and CMT assessments were not administered in mathematics and English Language Arts. Going forward, they will be replaced by Smarter Balanced assessments.

<b>SAT</b>			
	<b>2013</b>	<b>2014</b>	<b>2015</b>
<b>Mathematics – Average Score</b>	<b>497</b>	<b>515</b>	<b>501</b>
<b>Mathematics -- % scoring 600 or above</b>	<b>17.4%</b>	<b>17.5%</b>	<b>16%</b>
<b>Critical Reading – Average Score</b>	<b>487</b>	<b>510</b>	<b>498</b>
<b>Critical Reading -- % scoring 600 or above</b>	<b>11.5%</b>	<b>18.9%</b>	<b>16%</b>
<b>Critical Writing – Average Score</b>	<b>488</b>	<b>497</b>	<b>490</b>
<b>Critical Writing – 5 scoring 600 or above</b>	<b>12%</b>	<b>13%</b>	<b>13%</b>

<b>Percentage of Grade 10 Students Who Meet or Exceed Health Standard on the CT Physical Fitness Assessment</b>		
	<b>2013-14</b>	<b>2014-15</b>
<b>Flexibility</b>	<b>92.8</b>	<b>87.0</b>
<b>Strength / endurance (Curl-ups)</b>	<b>92.8</b>	<b>92.8</b>
<b>Upper Body Strength (Push-ups)</b>	<b>80.1</b>	<b>77.1</b>
<b>Cardiovascular (Mile run)</b>	<b>72.7</b>	<b>72.5</b>
<b>All Four</b>	<b>69.7</b>	<b>70.1</b>

<b>Advanced Placement Tests</b>			
	<b>2012</b>	<b>2013</b>	<b>2014</b>
<b>Number of AP Courses</b>	<b>16</b>	<b>18</b>	<b>19</b>
<b>Total Exams Taken</b>	<b>819</b>	<b>993</b>	<b>971</b>
<b>Total Exam Scores of 3,4, or 5</b>	<b>525</b>	<b>646</b>	<b>655</b>
<b>% of scores at 3 or above (generally earn college credit)</b>	<b>64%</b>	<b>65.1%</b>	<b>52%</b>

**Program Summaries-  
Board of Education**

**CITY OF BRISTOL, CONNECTICUT  
2016-2017  
GENERAL FUND EXPENDITURE SUMMARY FOR EDUCATION**

<b>ORG CODE</b>	<b>DESCRIPTION</b>	<b>PRIOR YEAR ACTUAL 2014-2015</b>	<b>ORIGINAL BUDGET 2015-2016</b>	<b>REVISED BUDGET 2015-2016</b>	<b>BUDGET REQUEST 2016-2017</b>	<b>JOINT BOARD 2016-2017</b>
1100	REGULAR INSTRUCTION	\$11,698,496	\$11,828,073	\$11,828,073	\$12,508,680	\$12,608,680
1102	ART	1,801,015	1,797,379	1,797,379	1,962,470	1,963,078
1103	BUSINESS EDUCATION	373,525	384,209	384,209	403,284	397,094
1105	LANGUAGE ARTS	3,688,786	3,860,203	3,857,108	3,850,167	3,853,311
1106	WORLD LANGUAGES	1,416,809	1,476,712	1,475,837	1,510,191	1,513,987
1108	WELLNESS	550,337	581,867	581,510	558,529	559,079
1109	FAMILY & CONSUMER SCIENCE (6-12)	252,513	259,171	259,171	268,320	266,798
1110	TECHNOLOGY EDUCATION (GRADES 6-12)	812,361	803,058	805,868	836,685	836,443
1111	MATHEMATICS (GRADES 1-12)	3,514,941	3,764,173	3,762,401	3,638,538	3,639,010
1112	MUSIC (GRADES 1-12)	1,504,981	1,870,049	1,870,049	1,531,192	1,531,262
1113	SCIENCE (GRADES 1-12)	3,249,157	3,358,988	3,356,513	3,400,774	3,402,075
1114	LANGUAGE ARTS/ READING (GRADES 1-8)	49,505	55,542	49,496	57,588	(884,458)
1115	SOCIAL STUDIES (GRADES 1-12)	3,360,970	3,453,285	3,449,785	3,491,367	3,490,662
1116	PHYSICAL EDUCATION (GRADES K-12)	2,021,320	2,064,521	2,064,521	2,177,703	(526,696)
1120	ALTERNATIVE EDUCATION (GRADES 7-11)	261,593	288,952	288,952	320,316	277,496
1121	KINDERGARTEN	1,338,872	1,239,970	1,239,970	1,329,025	1,329,586
1122	PRESCHOOL PROGRAM	51,813	54,603	54,603	10,450	12,250
1200	SPECIAL EDUCATION	8,802,059	9,469,880	9,469,880	10,585,293	10,197,294
1201	PRESCHOOL - SPED	826,597	906,607	906,607	796,128	778,377
1260	E.S.L	482,157	572,001	572,001	468,660	469,660
1270	GIFTED/ TALENTED	104,132	108,493	108,493	106,247	110,765
1310	ADULT BASIC EDUCATION	283,847	346,553	346,253	400,450	397,214
1400	SUMMER SCHOOL	0	38,058	38,058	45,664	45,664
1401	SUMMER SCHOOL - SPED	108,570	196,437	196,437	202,369	202,369
2112	ATTENDANCE SERVICES	49,531	47,485	47,485	48,315	48,315
2120	GUIDANCE SERVICES	1,698,928	1,702,187	1,698,827	1,799,816	1,808,699
2122	IN-HOUSE SUSPENSION	112,329	118,788	118,788	54,382	54,381
2140	PSYCHOLOGICAL SERVICES	1,244,746	1,342,493	1,342,493	1,460,691	1,458,815
2150	SPEECH PATHLOGOY	966,859	1,175,621	1,175,621	1,350,217	1,256,853
2190	TESTING	14,354	32,972	32,972	50,492	32,972
2195	AVID	39,812	76,630	76,630	79,700	80,700
2210	OFFICE TEACHING & LEARNING	1,339,912	1,249,181	1,253,709	1,330,947	1,243,666
2221	EDUCATIONAL MEDIA SERVICES	476,666	481,000	481,000	506,000	481,000
2222	LIBRARY & MEDIA SERVICES	749,785	879,047	878,815	1,102,413	877,385
2223	AUDIO-VISUAL SERVICES	7,223	9,793	8,198	0	9,793
2225	COMPUTER INSTRUCTION SERVICES	32,596	20,704	22,515	0	20,704
2226	LIBRARY AND MEDIA SERVICES	184,821	248,586	248,586	0	200,619
2227	AUDIO-VISUAL DW	200,526	208,529	208,529	271,712	210,920
2228	COMPUTER INSTRUCTION	1,414,452	1,471,516	1,471,504	1,550,717	1,483,471
2310	BOARD OF EDUCATION SERVICES	415,714	248,178	246,392	231,283	249,183
2320	SUPERINTENDENT	269,881	266,892	266,392	273,026	273,026
2321	DEPUTY SUPERINTENDENT	211,838	221,752	221,752	229,636	229,636
2329	HUMAN RESOURCE	474,219	472,398	472,199	468,759	468,759
2400	PRINCIPAL SERVICES	4,811,434	4,885,756	4,889,220	4,983,866	4,992,347
2510	FINANCE	3,101,855	17,937,100	3,343,526	18,974,029	19,771,300
2610	MAINTENANCE OF PLANT	2,058,349	2,231,912	2,231,912	2,574,557	2,304,992
2620	OPERATION OF PLANT	6,409,948	6,353,130	6,353,130	6,425,168	6,423,980
2630	SECURITY OF PLANT	29,753	31,000	31,000	31,000	31,000
2700	TRANSPORTATION	8,193,610	7,270,420	7,293,253	8,019,874	7,270,420
3100	SCHOOL LUNCH PROGRAM	63,251	0	0	0	0
3200	STUDENT ACTIVITIES	523,668	522,660	531,774	539,098	532,929
3210	ATHLETICS	1,227,091	1,503,932	1,480,775	1,523,075	1,501,581
6120	MAGNET TUITION	593,177	525,000	525,000	450,000	525,000
6125	MAGNET TUITION - SPED	263,306	236,628	236,628	331,606	236,628
6140	VO-AG TUITION	164,355	165,000	165,000	165,000	165,000
6150	DETENTION TUITION	109,246	25,000	25,000	110,000	25,000
6160	PRIVATE TUITION	19,077	100,000	100,000	40,000	100,000
6170	PUBLIC TUITION - SPED	1,864,229	1,538,616	1,538,616	1,621,535	1,538,616
6180	PRIVATE TUITION - SPED	4,957,806	4,457,960	4,457,960	3,975,236	4,768,550
<b>TOTAL EDUCATION</b>		<b>\$90,848,703</b>	<b>\$106,836,650</b>	<b>\$92,238,375</b>	<b>\$111,032,240</b>	<b>\$107,147,240</b>

