

BOARD OF EDUCATION

Ellen Solek, Ed.D.
Superintendent of Schools
129 Church Street
860-584-7000

District Mission Statement

Teach and Learn With Passion and Purpose

Service Narrative

The Bristol Public School system provides educational services ranging from pre-school through adult education programs. Bristol is known as one of the most effective urban districts in the State of Connecticut. Bristol provides an excellent education within a diverse environment, thereby preparing students for success in a challenging world. Bristol's reform and improvement model has been adopted by the Connecticut Department of Education for use in all urban districts in the State and many suburban and rural districts as well.

Within the school system, there are six elementary schools, which accommodate learners in pre-kindergarten through grade five; two 21st century K-8 schools were opened for the 2012-2013 school year. The West Bristol and Greene Hills K-8 schools are state of the art facilities incorporating the latest technologies. Two middle schools, Chippens Hill and Northeast, provide high quality, rigorous programs for grades six, seven and eight; and two comprehensive high schools, educate students in grades nine through twelve. Bristol Central and Bristol Eastern High Schools have been nationally recognized by U.S. News as performing in the top 5% of public high schools across the country. Many of our graduates are accepted at top-performing colleges and universities nationwide.

In addition to its regular public school programs, Bristol Preparatory Academy provides an alternative high school education program. Bristol maintains an extensive special education program with a variety of services provided to students from pre-school to age twenty-one. Bristol's program for gifted learners includes programs and teacher resource services for students identified as intellectually gifted in grades three through twelve. Academically gifted students may choose from numerous Advanced Placement courses that may provide them with college credit prior to high school graduation. A variety of College Pathways have been articulated with Tunxis Community College, affording students opportunities to earn college credits while still in high school.

The academic program is complemented by a wide variety of extracurricular activities, including intramural and interscholastic sports, instrumental and vocal music programs, and many student organizations, which are available to all students.

The Bristol community is further served by a parochial school system of three elementary (K-8) schools and one high school. The Bristol Technical Educational Center is open to adults and high school students in grades 11 and 12, and is approved for veterans. Opportunities for post-secondary education in technical, professional and the liberal arts fields abound in the area through both public and private schools. Tunxis Community College is one mile over the Bristol border in the town of Farmington and Central Connecticut State University is in nearby New Britain. Branches of the University of Connecticut and State technical colleges are located in both Waterbury and West Hartford, twenty minutes away.

Also available in the area are early childhood schools and day care facilities, as well as before and after care programs in all of the K-5 and K-8 schools.

Board of Education Summary - (continued)

Long Term Goals

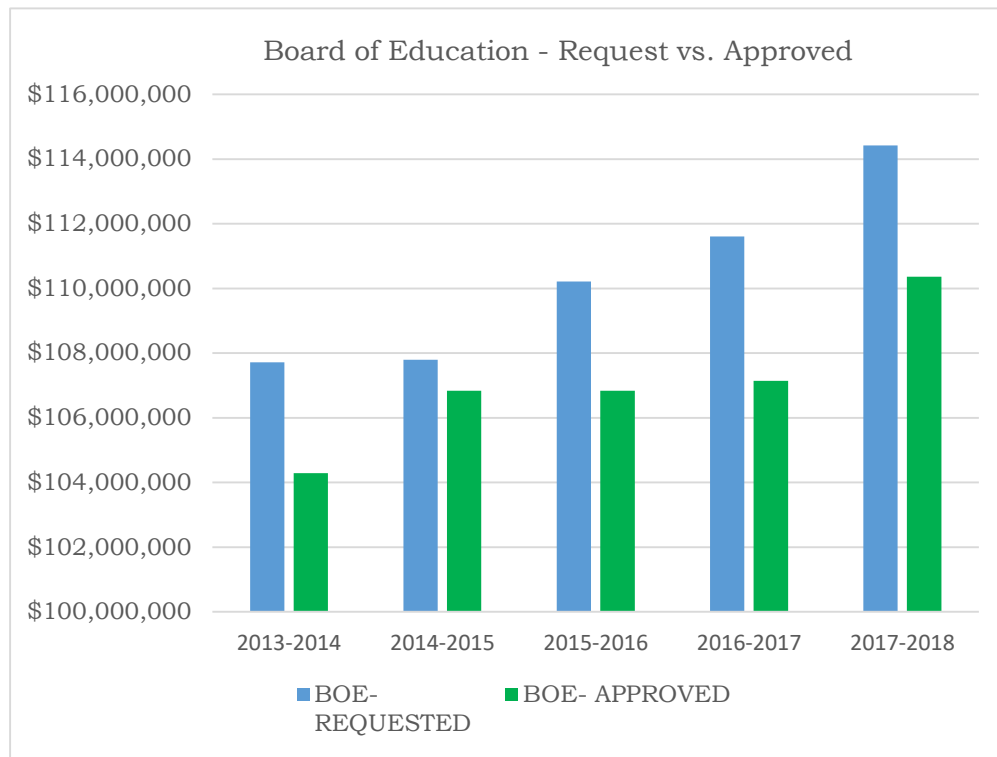
The Bristol Board of Education produces an annual Accountability Plan containing goals related to academic performance in mathematics, reading, writing and science, physical fitness, earning college credit prior to graduation and attendance. Each school created a School Student Success Plan, their school-based accountability plan - based upon the data related to their students. All of the school accountability plans are available on the district's website at www.bristol.k12.ct.us with direct links to each school's homepage.

The overarching goal of the Bristol School District calls for all students to be prepared for college or post-secondary education. To do this, we must focus on helping all students to achieve at high levels in rigorous coursework. We continue to focus on purposeful 21st century course re-design and alignment with the State's core curricula and on the 'instructional core' - what teachers do in the classroom with students around challenging content.

Budget Highlights

Alliance Grant: The Bristol Public Schools qualified as one of the Commissioner of Education's Alliance Districts in June of 2012. Appropriations will be provided to the district over a five year period, beginning in the 2012-13 school year. Bristol's Alliance grant funding is allocated toward improving upon important student achievement initiatives including early literacy and math acquisition, scientific research based interventions (SRBI), a tiered system of interventions for students and schools in the district, teacher professional development, science, technology, engineering and mathematic (STEM) focus, and implementation of expanded learning opportunities and early childhood programs.

Budget Summary

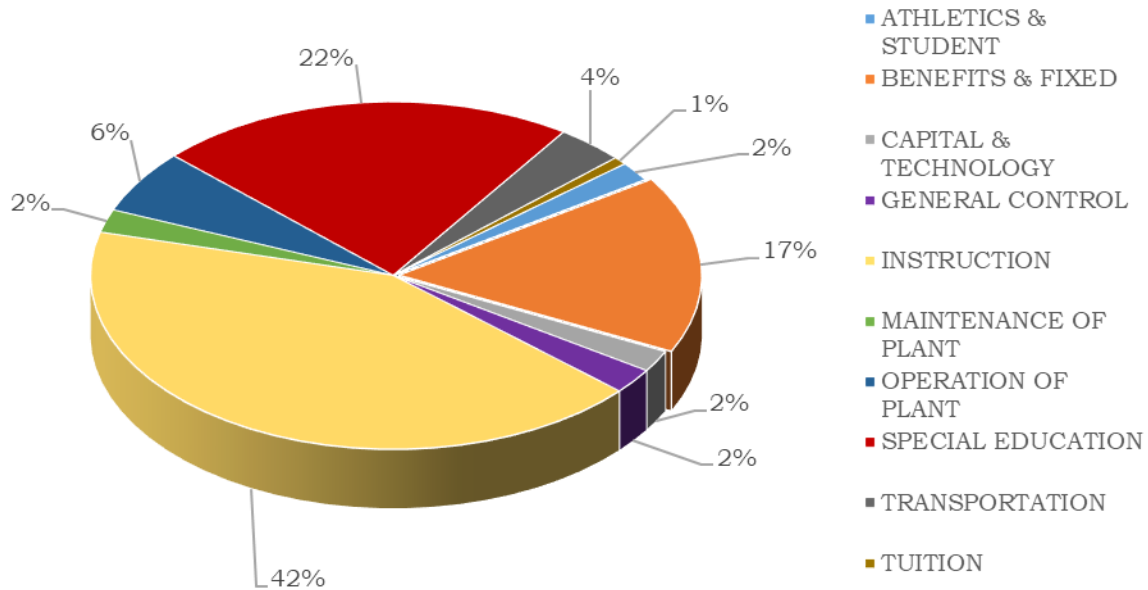


**Program Summaries-
Board of Education**

Board of Education Summary - (continued)

EDUCATION EXPENDITURE OBJECTS	2016 ACTUAL EXPENDITURE	2017 ORIGINAL BUDGET	2017 REVISED BUDGET	2018 BUDGET REQUEST	2018 JOINT BOARD APPROVED
ATHLETICS & STUDENT	\$1,910,420	\$2,032,930	\$2,040,464	\$2,032,022	\$1,987,147
BENEFITS & FIXED	16,813,159	18,955,404	18,955,404	19,645,713	18,246,562
CAPITAL & TECHNOLOGY	1,817,426	1,895,596	1,905,265	2,263,400	2,208,542
GENERAL CONTROL	2,384,437	2,543,051	2,542,431	2,627,023	2,600,633
INSTRUCTION	45,815,426	44,389,513	44,371,832	49,386,170	46,825,082
MAINTENANCE OF PLANT	2,261,285	2,335,992	2,335,992	2,381,475	2,381,475
OPERATION OF PLANT	6,463,069	6,423,980	6,423,980	6,683,201	6,540,526
SPECIAL EDUCATION	24,623,187	24,176,868	24,176,368	24,971,510	24,750,668
TRANSPORTATION	3,914,319	3,578,906	3,577,852	3,616,826	4,006,020
TUITION	827,972	815,000	815,000	815,000	815,000
TOTALS	\$106,830,700	\$107,147,240	\$107,144,588	\$114,422,340	\$110,361,655

Board of Education Expenditure Objects 2017-2018



**Program Summaries-
Board of Education**

Board of Education Summary - (continued)

Expenditure and Position Summary

	2015-2016	2016-2017	2017-2018
Salary Expenditures*	\$64,675,353	\$66,435,576	\$64,372,039
Full time Positions	968	988	955

*The salary expenditures represent funding from the General Fund only, excluding grant salary expenditures.

Personnel – General Fund	Fiscal Year 2015	Fiscal Year 2016	Fiscal Year 2017	Fiscal Year 2018
Teachers	586	586	589	574
Administrative & non-teaching	371	382	399	381
Total	957	968	988	955
Bristol Federation of Teachers - Local 1464	586	586	589	574
Bristol Association of Principals & Supervisors	31	30	30	30
Bristol Municipal Employees Local 2267 <i>Custodial, Maintenance, Paraprofessionals, Building Aides & Cafeteria Workers</i>	246	257	275	260
Council 4 AFSCME 818 Supervisors	6	6	6	6
Non-Bargaining Employees	14	15	15	15
Secretaries & library clerks – Local 3551	74	74	73	70
Total	957	968	988	955

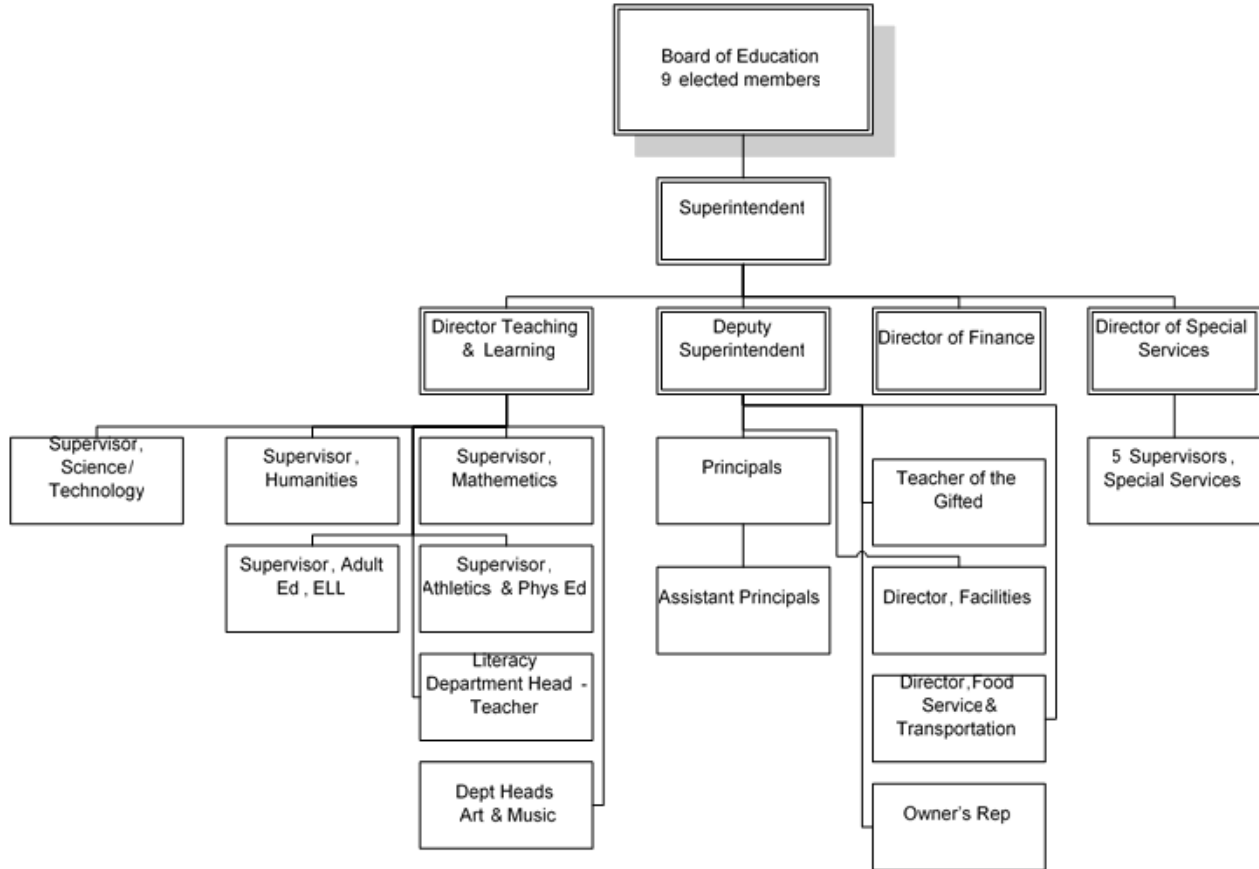
Historic Elementary, Middle and High School Enrollments (K-12)¹

School	10-1-11	10-1-12	10-1-13	10-1-14	10-1-15	10-1-16
Edgewood	393	366	354	339	342	326
Hubbell	503	440	424	427	457	438
Ivy Drive	398	426	398	408	405	396
Jennings	387	Closed	Closed	Closed	Closed	Closed
Mt. View	310	427	437	385	379	368
O'Connell	327	Closed	Closed	Closed	Closed	Closed
South Side	564	492	503	538	500	489
Stafford	439	519	504	459	461	457
Elementary Total:	3,628	2,670	2,620	2,556	2,544	2,474
Chippens Hill	816	754	718	775	713	773
Memorial Boulevard	512	Closed	Closed	Closed	Closed	Closed
Northeast	560	512	453	436	444	466
Middle School Total:	1,888	1,266	1,171	1,211	1,157	1,239
Greene-Hills	307	899	890	895	930	925
		899	944	919	919	893
K-8 Total:		1,798	1,834	1,814	1,849	1,818
Bristol Central	1,303	1,339	1,220	1,182	1,150	1,128
Bristol Eastern	1,292	1,271	1,277	1,255	1,199	1,136
Bristol Prep Academy					48	46
High School Total:	2,595	2,610	2,497	2,437	2,397	2,310
Total Enrollment	8,111	8,344	8,122	8,018	7,947	7,841
Out-placed Spec. Ed.	74	69	73	79	79	92

¹Note: Excludes After School Enrichment Program

Board of Education Summary - (continued)

Organizational Chart



BOARD OF EDUCATION MEMBERS

Christopher Wilson, Chairman
 Karen Hintz, Secretary
 Jennifer Dube
 Thomas P. O'Brien
 Tina Taylor

Karen Vibert, Vice-Chairman
 Jeff Caggiano
 Joseph Grabowski
 David Scott

CENTRAL OFFICE ADMINISTRATION

Ellen Solek, Ed.D., Superintendent
 Susan Kalt Moreau, Ph.D., Deputy Superintendent
 Steve Nembirkow, Business Manager
 Samuel Galloway, Director of Human Resources
 Dr. Michael Dieter, Ed.D., Director of Special Services
 Dr. Pam Brisson, Director of Teaching & Learning

**Program Summaries-
Board of Education**

Board of Education Summary - (continued)

Performance Measures

In 2014-15 and 2015-16, CAPT and CMT assessments were not administered in mathematics and English Language Arts. Going forward, they were replaced by Smarter Balanced assessments.

SAT			
	2014	2015	2016
Mathematics – Average Score	515	501	484
Mathematics -- % scoring 600 or above	17.5%	16%	15%
Critical Reading – Average Score	510	498	508
Critical Reading -- % scoring 600 or above	18.9%	16%	17%
Critical Writing – Average Score	497	490	508
Critical Writing – 5 scoring 600 or above	13%	13%	17%

Percentage of Grade 10 Students Who Meet or Exceed Health Standard on the CT Physical Fitness Assessment		
	2014-15	2015-2016
Flexibility	87.0	87
Strength / endurance (Curl-ups)	92.8	90
Upper Body Strength (Push-ups)	77.1	72
Cardiovascular (Mile run)	72.5	83
All Four	70.1	60

Advanced Placement Tests			
	2013	2014	2015
Number of AP Courses	18	19	18
Total Exams Taken	993	971	980
Total Exam Scores of 3,4, or 5	646	655	654
% of scores at 3 or above (generally earn college credit)	65.1%	52%	60%

**Program Summaries-
Board of Education**

Board of Education Summary - (continued)

**CITY OF BRISTOL, CONNECTICUT
2017-2018
GENERAL FUND EXPENDITURE SUMMARY FOR EDUCATION**

ORG CODE	DESCRIPTION	2016 ACTUAL EXPENDITURE	2017 ORIGINAL BUDGET	2017 REVISED BUDGET	2018 BUDGET REQUEST	2018 JOINT BOARD
1100	REGULAR INSTRUCTION	\$11,403,410	\$12,608,680	\$12,629,332	\$12,656,502	\$11,427,668
1102	ART	1,899,343	1,963,078	1,963,078	\$1,895,600	\$1,892,251
1103	BUSINESS EDUCATION	384,416	397,094	402,654	\$412,606	\$334,198
1105	LANGUAGE ARTS	3,715,666	3,853,311	3,850,915	\$3,975,168	\$3,772,366
1106	WORLD LANGUAGES	1,459,703	1,513,987	1,507,947	\$1,511,650	\$1,344,239
1108	WELLNESS	494,235	559,079	558,007	\$593,755	\$592,630
1109	FAMILY & CONSUMER SCIENCE (6-12)	258,243	266,798	267,910	\$274,365	\$274,365
1110	TECHNOLOGY EDUCATION (GRADES 6-12)	810,919	836,443	834,948	\$884,359	\$882,009
1111	MATHEMATICS (GRADES 1-12)	3,587,054	3,639,010	3,635,470	\$3,866,204	\$3,756,877
1112	MUSIC (GRADES 1-12)	1,466,924	1,531,262	1,488,632	\$1,699,887	\$1,663,907
1113	SCIENCE (GRADES 1-12)	3,277,733	3,402,075	3,395,730	\$3,412,684	\$3,372,347
1114	LANGUAGE ARTS/ READING (GRADES 1-8)	37,449	(884,458)	(875,751)	\$62,953	\$56,391
1115	SOCIAL STUDIES (GRADES 1-12)	3,382,818	3,490,662	3,488,359	\$3,563,344	\$3,462,877
1116	PHYSICAL EDUCATION (GRADES K-12)	2,062,023	(526,696)	(527,196)	\$2,145,342	\$2,049,554
1120	ALTERNATIVE EDUCATION (GRADES 7-11)	274,977	277,496	277,496	\$290,107	\$285,882
1121	KINDERGARTEN	1,322,218	1,329,586	1,329,586	\$1,427,154	\$1,426,444
1122	PRESCHOOL PROGRAM	53,576	12,250	54,880	\$58,184	\$57,784
1200	SPECIAL EDUCATION	9,666,774	10,197,294	10,210,994	\$10,720,002	\$10,625,925
1201	PRESCHOOL - SPED	822,746	778,377	861,981	\$937,888	\$900,926
1260	E.S.L	513,647	469,660	449,170	\$640,130	\$569,389
1270	GIFTED/ TALENTED	100,739	110,765	110,765	\$114,350	\$111,015
1310	ADULT BASIC EDUCATION	307,602	397,214	397,214	\$334,193	\$334,193
1400	SUMMER SCHOOL	38,058	45,664	45,664	\$45,664	\$45,664
1401	SUMMER SCHOOL - SPED	108,683	202,369	189,619	\$202,369	\$202,369
2112	ATTENDANCE SERVICES	48,145	48,315	48,315	\$52,785	\$52,785
2120	GUIDANCE SERVICES	1,784,222	1,808,699	1,799,329	\$1,878,167	\$1,698,202
2122	IN-HOUSE SUSPENSION	108,073	54,381	54,381	\$118,694	\$118,694
2140	PSYCHOLOGICAL SERVICES	1,157,413	1,458,815	1,458,815	\$1,392,475	\$1,392,475
2150	SPEECH PATHLOGOY	1,040,024	1,256,853	1,172,299	\$1,180,553	\$1,090,750
2190	TESTING	5,590	32,972	32,972	\$57,320	\$56,501
2195	AVID	35,932	80,700	80,700	\$80,151	\$65,209
2210	OFFICE TEACHING & LEARNING	1,137,777	1,243,666	1,244,136	\$1,310,208	\$1,246,265
2221	EDUCATIONAL MEDIA SERVICES	364,737	481,000	481,000	\$480,000	\$475,000
2222	LIBRARY & MEDIA SERVICES	887,091	877,385	868,899	\$957,110	\$953,110
2223	AUDIO-VISUAL SERVICES	3,249	9,793	8,919	\$11,040	\$9,220
2225	COMPUTER INSTRUCTION SERVICES	19,164	20,704	19,870	\$22,474	\$20,504
2226	LIBRARY AND MEDIA SERVICES	160,391	200,619	197,704	\$247,082	\$231,733
2227	AUDIO-VISUAL DW	205,805	210,920	210,920	\$248,232	\$244,265
2228	COMPUTER INSTRUCTION	1,444,903	1,483,471	1,486,386	\$1,761,940	\$1,717,633
2310	BOARD OF EDUCATION SERVICES	227,285	249,183	249,183	\$251,650	\$246,290
2320	SUPERINTENDENT	267,813	273,026	273,026	\$274,509	\$271,009
2321	DEPUTY SUPERINTENDENT	218,954	229,636	229,636	\$226,935	\$231,345
2329	HUMAN RESOURCE	470,324	468,759	468,439	\$531,643	\$530,519
2400	PRINCIPAL SERVICES	4,956,297	4,992,347	5,002,877	\$5,082,615	\$4,939,702
2510	FINANCE	17,658,794	19,771,300	19,771,300	\$20,507,063	\$19,091,912
2610	MAINTENANCE OF PLANT	2,237,245	2,304,992	2,300,492	\$2,360,475	\$2,360,475
2620	OPERATION OF PLANT	6,463,069	6,423,980	6,423,980	\$6,683,201	\$6,540,526
2630	SECURITY OF PLANT	24,040	31,000	35,500	\$21,000	\$21,000
2700	TRANSPORTATION	8,622,257	7,270,420	7,270,420	\$7,405,658	\$7,805,463
3200	STUDENT ACTIVITIES	527,060	532,929	547,551	\$531,053	\$525,952
3210	ATHLETICS	1,386,036	1,501,581	1,502,081	\$1,502,374	\$1,462,374
6120	MAGNET TUITION	544,378	525,000	525,000	\$525,000	\$525,000
6125	MAGNET TUITION - SPED	280,680	236,628	236,628	\$241,628	\$241,628
6140	VO-AG TUITION	145,620	165,000	165,000	\$165,000	\$165,000
6150	DETENTION TUITION	78,134	25,000	25,000	\$25,000	\$25,000
6160	PRIVATE TUITION	59,841	100,000	100,000	\$100,000	\$100,000
6170	PUBLIC TUITION - SPED	2,228,024	1,538,616	1,538,616	\$1,577,081	\$1,577,081
6180	PRIVATE TUITION - SPED	4,583,377	4,768,550	4,768,550	\$4,887,763	\$4,887,763

TOTAL EDUCATION \$106,830,700 \$107,147,240 \$107,145,328 \$114,422,339 \$110,361,655 271

